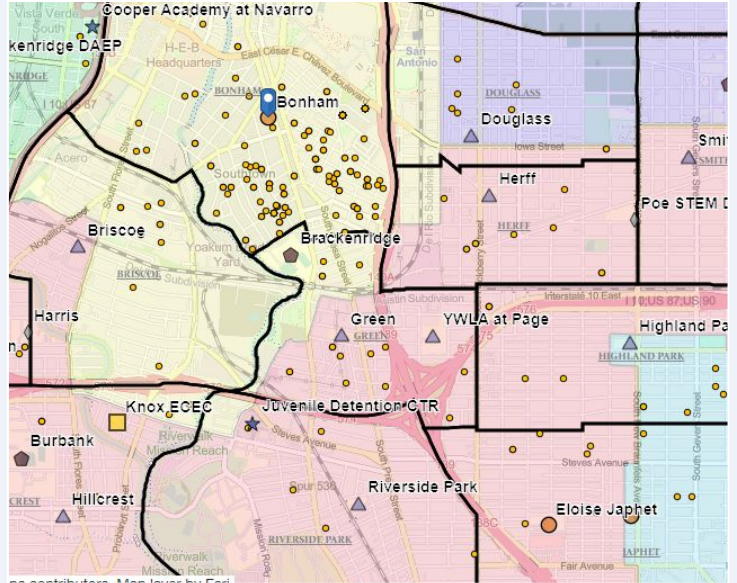


Bonham Academy

SCHOOL OVERVIEW

Location:	925 S Saint Marys St San Antonio, TX 78205
Grades:	K-8
Enrollment:	599
Poverty Index:	40%
Trustee/SMD:	Sorensen - District 1
HS Feeder Pattern:	Brackenridge
Recommendation:	<ul style="list-style-type: none"> Merge with Green to make a single, resource-rich, fully-enrolled PK-08 program in the King William and Roosevelt Park neighborhoods.

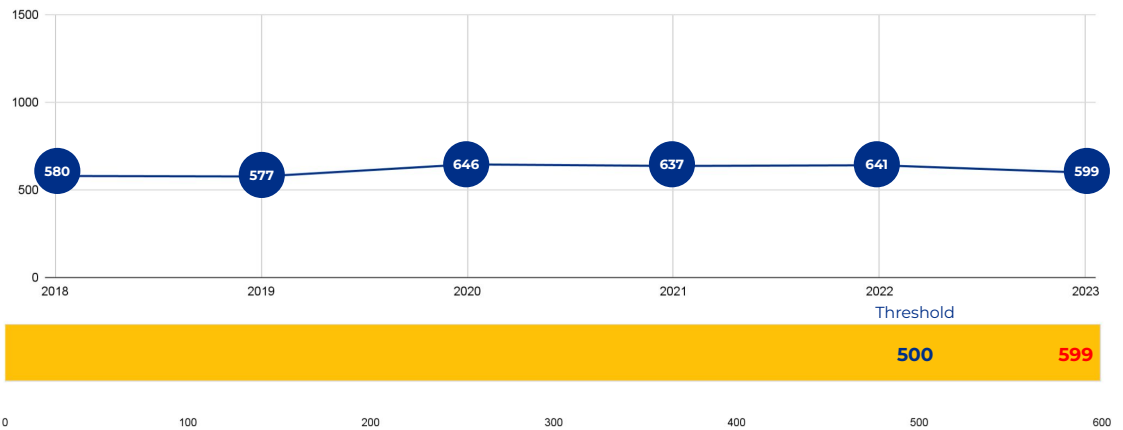


PRIMARY CRITERIA #1: 2022-23 ENROLLMENT

2023 Enrollment
599

Campus Type
Academy

Enrollment Threshold
500



	2018	2019	2020	2021	2022	2023
Total Enrollment:	580	577	646	637	641	599

PRIMARY CRITERIA #2: FACILITY COST PER PUPIL

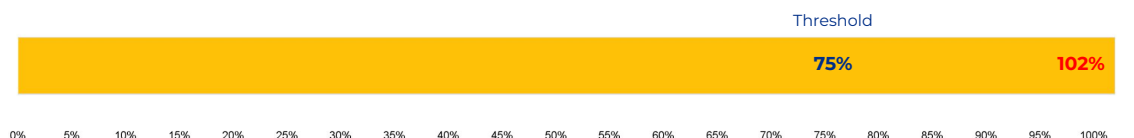
Cost Per Pupil
\$8,083



PRIMARY CRITERIA #3: 2022-23 FACILITY USE

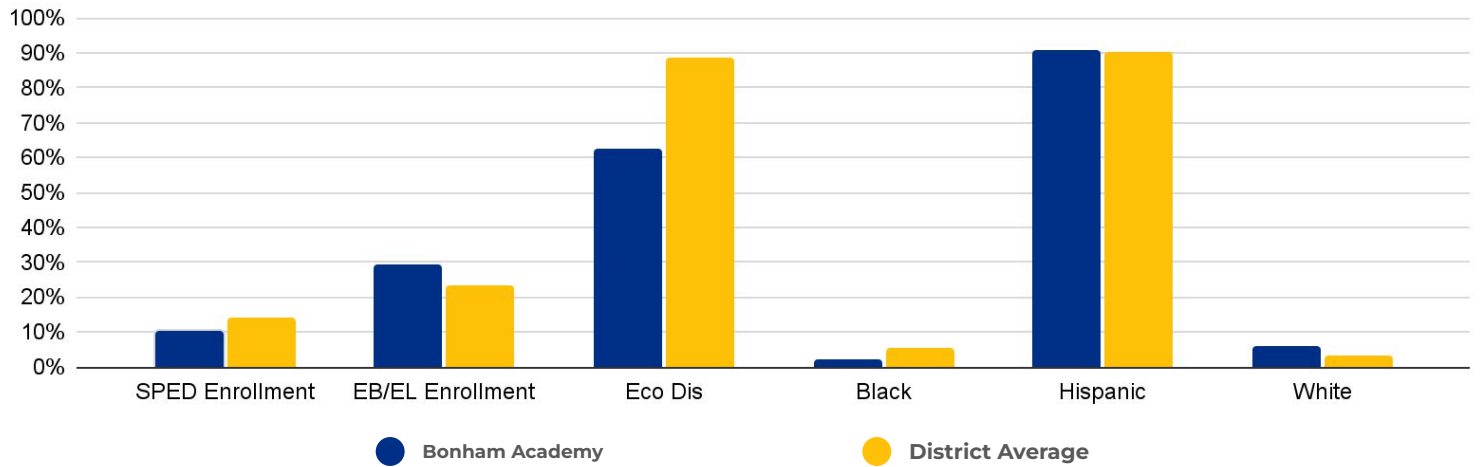
Functional Capacity
586

Facility Usage
102%

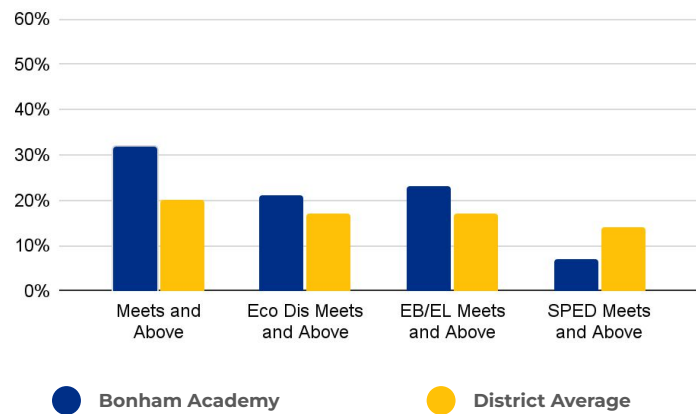


Bonham Academy

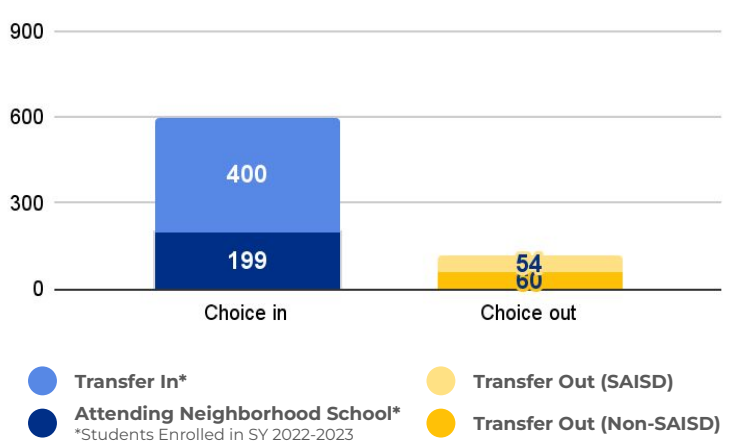
DEMOGRAPHICS



2022 ACADEMIC PERFORMANCE



2022-23 CHOICE IN / CHOICE OUT



BRIEF CRITERIA ANALYSIS

By merging Green with Bonham Academy as one school across two campuses, students will benefit from increased building utilization at Green and the alleviation of congestion at Bonham. This decision also will expand the number of seats made available at Bonham Academy, a high-demand school with a waitlist. As the result, it is projected that in 2024 there will be 449 students in grades 03-08 at Bonham, and a total of 718 PK-8 students at Bonham Academy.

BENEFITS OF RIGHTSIZING

Rightsizing will lead to increased enrollment and additional resources. How those resources are used will be decided by the school's principal, staff and Campus Advisory Council. Rightsizing decisions will lead to early childhood services in every elementary school, fewer split grade levels or teaching assignments, more courses or full-time specialty teachers (art, music, AVID, etc), increased staff collaboration, additional student services (mental health, social work, academic intervention, etc), more robust dual language programs, greater access to extracurriculars, and increases to campus budgets for positions like library services, Family and Community Engagement Specialists, and instructional coaches.

With Bonham and Green merging into one academy across two campuses, students and families will gain access to:

- Dual language programming starting in PK for both the current Bonham and Green communities;
- A full time art teacher at Bonham and additional art instruction on the Green campus;
- A ballet folklorico program;
- On-campus ALE special education instruction; and
- On-campus access to American Sign Language instruction; and
- Access to the academy model (PK-08) for all Green students.